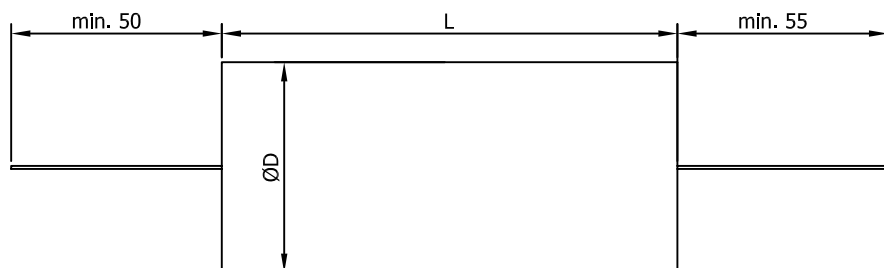


Kondensator AUDIO AUDIO Capacitor



Dane Techniczne / Technical data:

Napięcie znamionowe Ur 600VDC
Rated voltage

Tg kąta stratności <0,0050 @ 1kHz dla C≤1µF
Disipation factor <0,0080 @ 1kHz dla C>1µF

Kategoria klimatyczna 025/085/21/C
Climatic category

Wymiary zgodnie z tabelą
Dimensions acc. to table

(Uwagi/Notes)

1. Wyrób spełnia wymagania Dyrektywy RoHS (2011/65/WE).
This product fulfils the requirements of the RoHS Directive (2011/65/EC).

Pojemność znamionowa Rated capacitance	Tolerancja pojemności Capacitance tolerance	Wymiary / Dimensions	
		D max.	L+3/-2
µF	%	mm	mm
0,022	±2% / ±5%	12,7	29
0,027		13,7	
0,033		14,9	
0,039		16,0	
0,047		17,3	
0,056		18,7	
0,068		13,5	
0,082		14,5	
0,1		15,8	
0,12		17,1	
0,15	18,8	38	
0,18	20,4		
0,22	22,3		
0,27	24,6		
0,33	27,0		
0,39	29,1		
0,47	31,8	60	
0,56	25,3		
0,68	27,6		
0,82	30,2		
1,0	35,9		

Istnieje możliwość uzgodnienia innych pojemności oraz długości i rodzaju wyprowadzeń.

Other capacitance values, lengths and types of leads are available at request upon prior agreement.

Description:

The KFPM-01 capacitors are distinguished by the use of electrodes made of copper foil, separated by polypropylene film. These capacitors are designed for use in audio equipment. The design of the capacitors minimizes the parasitic impedance components: inductance and resistance, resulting in improved quality of sound in a given audio system, where the positive effect is enhanced by the use of electrodes made of copper foil.

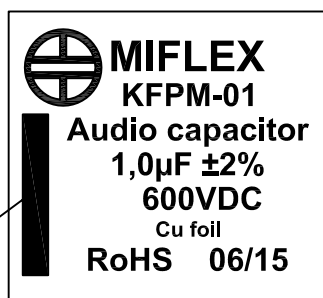
High quality and durability of the capacitors is assured by the use of carefully selected materials, production technology, as well as testing and measuring methods. These capacitors feature the use of axial terminals made of tinned copper wire, cover in the form of special protective tape, and self-extinguishing potting compound of flammability class V0.

The capacitors are furthermore subjected to a series of specific tests and measurements, including a unique test using pulses of increased current amplitude and frequency of 22kHz.

The KFPM-01 capacitors can be used in d.c. and a.c. circuits within the temperature range of their climatic category. The d.c. voltage value or a.c. voltage amplitude should not exceed the specified rated voltage.

PRZYKŁADOWY NADRUK
PRINTING LAYOUT EXAMPLE

Oznakowanie okładziny zewnętrznej - krótsze wyprowadzenie / Marking of the outer electrode - shorter terminal



MIFLEX SA

ZAKŁADY PODZESPOŁÓW RADIOWYCH
99-300 KUTNO, ul.GRUNWALDZKA 3

Telefon: +48 24 355 11 00

Fax: +48 24 355 11 88

e-mail: miflexsa@miflex.com.pl

Index: KFPM...

Revision date
08.08.2018.

Page
1/1